

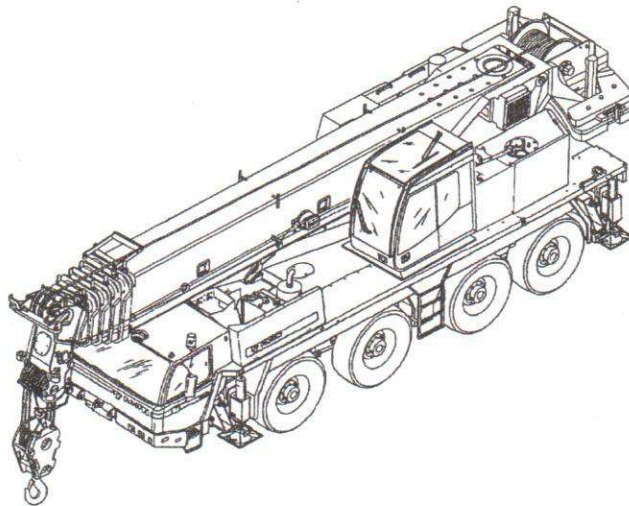
# TADANO

## ALL-TERRAIN-CRANE

### ATF 80-4

Serial-No.: 85107

Version: 00



01261

## LOAD RATING CHARTS

INSTRUCTION FOR LIFTING CAPACITIES

OUTRIGGER REACTION FORCE CHARTS

TADANO AMERICA CORPORATION  
4242 West Greens Road  
Houston, Texas 77066  
Phone: (281) 869-0030  
Fax: (281) 869-0040  
[www.tadanoamerica.com](http://www.tadanoamerica.com)

**GENERAL**

1. Total rated loads shown on the TADANO LOAD RATING CHART apply only to the machine as originally manufactured and normally equipped by TADANO. Modifications to the machine or use of optional equipment other than that specified can result in a reduction of capacity.
2. Construction equipment can be dangerous if improperly operated or maintained. Operation and maintenance of this machine must be in compliance with the information in the operation, safety and maintenance manual supplied with the machine. If this manual is missing, order replacement through the distributor.
3. The operator and other personnel associated with this machine shall fully acquaint themselves with the latest applicable American National Standards Institute (ANSI) safety standards for cranes.

**SET UP**

1. Total rated loads shown on the TADANO LOAD RATING CHART are the maximum allowable crane capacities and are based on the machine standing level on firm supporting surface under ideal job conditions. Depending on the nature of the supporting surface, it may be necessary to have structural supports under the outrigger floats to spread the load to a larger bearing surface.
2. For on outrigger operation, outriggers shall be extended to the dimension according to the TADANO LOAD RATING CHART and secured by pins with tires free of supporting surface, before operating crane.
3. If counterweight is moved down from stop during crane operation ( indicator "counterweight center" goes out), all crane movements are switched off. Counterweight must raised again to its stop.

**OPERATION**

1. Total rated loads with outriggers fully extended do not exceed 85% of the tipping loads. Total rated loads with outriggers half extended are determined from the formular:  
total rated load = (tipping load -0,1 tip reaction) / 1.25
2. The crane's structural steelwork is in accordance with DIN 15018, part 3. Design and construction of the crane comply with DIN 15018, part 2 and with F.E.M. regulations.
3. Total rated loads above the bold lines in the TADANO LOAD RATING CHART are based on crane strength and those below the bold lines on crane stability.
4. Total rated loads include the weight of the main hook block, auxiliary hook ball, sling and other auxiliary lifting devices and all their weights shall be subtracted from the listed capacities to obtain the net load to be lifted.

Hookball/Hookblock (ton)	6.6	22.0			44.1				69.4				110.0			
No. of parts of line	1	2	3	4	5	6	7	8	9	10	11	12	14	16	17	
Max. lifting capacity (ton)	6.3	13.4	20.2	26.9	33.1	39.4	44.1	51.1	57.0	62.6	68.5	73.6	84.4	95.1	100.0	
Weight (lbs)	330	440			880				1,325				2,000			

5. Total rated loads are based on freely suspended loads and make no allowance for such factors as the effect of wind, sudden stopping of loads, supporting surface conditions, operating speeds, side loads, etc. Side pull on boom or jib is extremely dangerous.
6. Total rated loads do not account for wind on lifted load or boom. Total rated loads and boom length shall be appropriately reduced, when wind velocity is above 22 mph ( 32 ft/sec. ).
7. Total rated loads at load radius shall not be exceeded. Do not tip the crane to determine allowable loads.
8. Do not operate at boom lengths beyond radii or boom angles where no capacities are shown. Crane may overturn without any load on the hook.
9. Slewing of the superstructure is admissible only when the crane is supported on half or fully extended outriggers.

**21. Working with Single Top**

Operation with the single top is allowed with the main winch and the auxiliary winch (2nd winch). The maximum allowed capacity is limited by the selected S.L.I. code for main boom operation according to existing counterweight and outrigger base at one side and by the single line pull which is limited by hydraulic pressure at the other side.

For operations with the single top mounted, use the TADANO LOAD RATING CHART for the telescopic boom in accordance with existing counterweight and outrigger base to find the total rated lifting capacity and also select the correct S.L.I. code for the telescopic boom in accordance with the existing counterweight and outrigger base. Find the total rated lifting capacity based on boom length and working radius. From that value, subtract 1,100 lbs and the weights of all lifting equipment used including hook block, sling and other auxiliary lifting devices.

The result (<total rated lifting capacity> - <1,100 lbs> - <lifting equipment>) is the total rated lifting capacity for a single top lift.

**Definitions**

**Working Radius:** Horizontal distance from a projection of the axis of rotation to supporting surface before loading to the center of the vertical hoist line or tackle with load applied. The deflection of the boom due to its deadweight and the rated load are taken into account.

**Loaded Boom Angle:** The angle between the boom base section and the horizontal, after lifting the total rated load at the working radius.

**Working Area:** Area measured in a circular arc about the centerline of rotation.

**Freely Suspended Load:** Load hanging free with no direct external force applied except by the hoist line.

**Side Load:** Horizontal side force applied to the lifted load either on the ground or in the air.



**Load rating chart ATF 80-4**


Lifting capacities in 1,000 lbs according per SAE J765, at telescopic boom

**Counterweight 39,683 lbs**  
 On outriggers, 360° working area  
**Outrigger base 23.62 ft**

Working Radius (ft)	Boom length (ft)												Working Radius (ft)								
	35.4		47.9		47.9		60.0		60.0		60.0			72.5		72.5		72.5			
	∠	∠	∠	∠	∠	∠	∠	∠	∠	∠	∠	∠		∠	∠	∠	∠	∠	∠		
9	70	200.0*																		9	
10	68	167.5	74	163.5	74	89.3	78	140.5	78	89.5	78	139.5	78	59.9	80	113.5	80	66.9	80	50.9	10
12	64	148.5	71	148.5	71	84.3	76	138.0	76	86.0	76	130.5	76	56.8	79	107.5	79	63.3	79	50.9	12
14	60	129.0	69	128.5	69	79.4	74	126.5	74	82.5	74	121.0	74	53.7	77	101.5	77	59.8	77	50.2	14
16	56	114.0	66	113.5	66	74.4	71	113.0	71	79.0	71	111.0	71	50.6	75	95.6	75	56.3	75	48.6	16
18	52	103.0	64	102.5	64	69.6	70	101.0	70	75.7	70	99.8	70	47.6	74	89.5	74	52.8	74	47.0	18
20	47	92.3	61	92.3	61	64.9	68	90.3	68	72.2	68	88.6	68	44.5	72	83.5	72	49.3	72	45.4	20
25	33	72.1	53	72.1	53	56.0	62	70.1	62	60.9	62	68.4	62	37.7	68	68.4	68	41.2	68	41.3	25
30			44	58.1	44	49.3	56	56.3	56	52.7	56	54.6	56	32.5	64	55.0	64	35.5	64	36.3	30
35			34	48.2	34	44.5	50	46.4	50	46.7	50	44.9	50	28.7	58	45.3	58	31.0	58	31.9	35
40			19	38.9	19	40.2	43	38.8	43	41.3	43	37.3	43	25.7	53	37.7	53	27.4	53	28.3	40
45							35	31.7	35	36.6	35	30.2	35	23.2	48	30.8	48	24.6	48	25.4	45
50							22	26.6	22	31.1	22	25.1	22	21.1	42	25.6	42	22.4	42	23.3	50
55															35	21.4	35	20.5	35	21.3	55
60															26	17.6	26	18.7	26	19.3	60
65															12	12.9	12	17.4	12	16.4	65
70																					70
75																					75
80																					80
85																					85
90																					90
95																					95
100																					100
110																					110
120																					120
130																					130
140																					140
150																					150
Telescoping sequence %																					
Tel. 1	0	0	0	50	0	100	0	100	0	0	0	100	0	0	0	0	0	0	0	Tel. 1	
Tel. 2	0	50	0	50	0	0	0	50	0	0	0	50	0	0	0	0	0	0	0	Tel. 2	
Tel. 3	0	0	0	0	0	0	0	0	0	0	0	0	0	0	0	0	0	0	0	Tel. 3	
Tel. 4	0	0	0	0	50	0	0	0	0	0	0	0	0	0	100	50	0	0	0	Tel. 4	
Tel. 5	0	0	50	0	50	0	100	0	0	0	100	0	0	50	100	0	0	0	0	Tel. 5	
<b>Code</b>	<b>0 XX 01 0</b>	<b>0 15 01 0</b>	<b>0 10 01 0</b>	<b>0 16 01 0</b>	<b>0 11 01 0</b>	<b>0 05 01 0</b>	<b>0 01 01 0</b>	<b>0 15 01 0</b>	<b>0 10 01 0</b>	<b>0 09 01 0</b>	<b>Code</b>										

\* Over rear with superstructure swing lock pin engaged and additional equipment, Code 0 01 01 5

Operation and maintenance of this machine must be in compliance with the information provided in the "Operation and Maintenance Manual" supplied with this machine.

 <b>Load rating chart ATF 80-4</b> Lifting capacities in 1,000 lbs according per SAE J765, at telescopic boom <b>Counterweight 39,683 lbs</b> On outriggers, 360° working area <b>Outrigger base 23.62 ft</b>																					
Working Radius (ft)	Boom length (ft)											Working Radius (ft)									
	85.0		85.0		85.0		97.4		97.4		97.4		109.9		109.9		109.9		109.9		
	°	°	°	°	°	°	°	°	°	°	°	°	°	°	°	°	°	°	°	°	°
9																					9
10																					10
12																					12
14	79	81.5	79	62.5	79	44.6															14
16	78	79.0	78	60.2	78	42.9															16
18	77	76.4	77	57.7	77	41.3	79	61.9	79	47.5	79	40.9									18
20	75	73.7	75	55.2	75	39.6	78	59.6	78	46.1	78	40.0	79	49.4	79	48.5	79	43.9	79	36.0	20
25	72	63.9	72	49.0	72	35.8	75	54.1	75	42.5	75	37.4	77	45.8	77	45.1	77	41.0	77	33.9	25
30	68	54.4	68	42.9	68	31.6	72	48.6	72	38.7	72	35.0	74	42.4	74	41.6	74	38.1	74	31.8	30
35	64	45.3	64	37.5	64	28.0	69	42.8	69	34.9	69	31.9	72	38.7	72	38.3	72	35.6	72	29.5	35
40	60	37.9	60	32.8	60	24.6	66	37.2	66	30.7	66	28.3	69	35.5	69	35.0	69	32.7	69	27.3	40
45	56	31.0	56	29.3	56	22.1	62	31.7	62	27.5	62	25.3	66	31.8	66	31.3	66	29.9	66	25.1	45
50	51	25.9	51	26.5	51	20.0	58	26.7	58	24.7	58	23.1	63	27.5	63	27.1	63	27.0	63	23.1	50
55	47	21.7	47	24.0	47	18.3	54	22.5	54	22.3	54	21.0	59	23.5	59	23.1	59	24.6	59	21.0	55
60	42	18.2	42	22.0	42	16.9	50	19.6	50	20.2	50	19.1	56	20.0	56	19.7	56	22.5	56	19.1	60
65	36	15.3	36	20.5	36	15.6	46	16.2	46	18.7	46	17.8	53	17.3	53	16.9	53	19.9	53	17.6	65
70	28	13.1	28	18.4	28	14.7	42	13.8	42	17.3	42	16.5	50	14.9	50	14.5	50	17.7	50	16.2	70
75	21	10.9	21	16.2	21	13.9	37	11.7	37	16.2	37	15.4	46	12.8	46	12.4	46	15.7	46	15.0	75
80							31	10.0	31	15.1	31	14.6	42	11.1	42	10.6	42	13.9	42	13.9	80
85							23	8.5	23	13.5	23	13.7	37	9.6	37	9.1	37	12.4	37	13.3	85
90													32	8.2	32	7.8	32	11.2	32	12.4	90
95													26	7.1	26	6.6	26	10.1	26	11.6	95
100													19	6.1	19	5.6	19	8.9	19	10.8	100
110																					110
120																					120
130																					130
140																					140
150																					150
Telescoping sequence %																					
Tel. 1	100	0	0	100	0	0	100	100	0	0	100	100	0	0	Tel. 1						
Tel. 2	100	0	0	100	0	0	100	100	100	0	100	100	100	0	Tel. 2						
Tel. 3	0	100	0	50	100	50	50	100	100	100	100	100	100	100	Tel. 3						
Tel. 4	0	50	100	0	100	100	50	0	50	100	100	100	50	100	Tel. 4						
Tel. 5	0	50	100	0	50	100	0	0	0	50	100	100	50	100	Tel. 5						
<b>Code</b>	<b>0 04 01 0</b>	<b>0 11 01 0</b>	<b>0 01 01 0</b>	<b>0 14 01 0</b>	<b>0 10 01 0</b>	<b>0 08 01 0</b>	<b>0 13 01 0</b>	<b>0 03 01 0</b>	<b>0 11 01 0</b>	<b>0 01 01 0</b>	<b>Code</b>										

Operation and maintenance of this machine must be in compliance with the information provided in the "Operation and Maintenance Manual" supplied with this machine.

Working Radius (ft)		Load rating chart ATF 80-4										Working Radius (ft)													
		Lifting capacities in 1,000 lbs according per SAE J765, at telescopic boom Counterweight 39,683 lbs On outriggers, 360° working area Outrigger base 23.62 ft																							
		Boom length (ft)																							
		122.4		122.4		122.4		134.5		134.5		134.5		147.0		147.0		159.1							
		°		°		°		°		°		°		°		°		°							
		/		/		/		/		/		/		/		/		/							
9																			9						
10																			10						
12																			12						
14																			14						
16																			16						
18																			18						
20																			20						
25	78	36.2	78	34.0	78	29.7	79	28.9	79	29.5	79	25.6							25						
30	76	34.0	76	32.0	76	28.5	78	28.8	78	29.4	78	25.4	79	23.1	79	21.4			30						
35	74	32.0	74	30.2	74	27.3	75	27.4	75	28.3	75	24.4	77	22.9	77	21.2	78	19.8	35						
40	72	30.0	72	28.4	72	26.3	74	26.0	74	27.2	74	23.5	75	22.2	75	20.9	77	19.8	40						
45	69	28.1	69	26.6	69	25.1	71	24.5	71	26.0	71	22.6	73	21.3	73	20.2	75	19.3	45						
50	67	26.0	67	24.7	67	24.0	69	23.4	69	25.0	69	21.8	71	20.8	71	19.8	73	18.6	50						
55	64	23.4	64	23.0	64	22.9	67	22.2	67	23.4	67	20.8	69	20.1	69	19.4	71	18.0	55						
60	61	20.4	61	21.3	61	21.8	65	20.6	65	21.1	65	19.7	68	19.3	68	18.9	70	17.5	60						
65	58	17.7	58	19.6	58	20.2	62	18.5	62	18.4	62	18.8	65	18.8	65	18.6	68	16.8	65						
70	55	15.4	55	17.9	55	18.7	59	16.2	59	16.0	59	17.4	63	16.8	63	17.5	66	16.3	70						
75	52	13.3	52	16.2	52	17.1	57	14.2	57	13.9	57	16.2	61	14.8	61	15.9	64	15.1	75						
80	49	11.5	49	14.4	49	15.5	54	12.4	54	12.2	54	15.1	58	13.0	58	14.2	61	13.3	80						
85	45	10.0	45	12.9	45	14.0	51	10.9	51	10.7	51	13.5	56	11.3	56	12.9	59	12.0	85						
90	41	8.7	41	11.7	41	12.8	48	9.5	48	9.3	48	12.2	53	10.1	53	11.5	57	10.8	90						
95	38	7.5	38	10.5	38	11.6	45	8.4	45	8.2	45	11.1	50	9.0	50	10.3	55	9.6	95						
100	33	6.5	33	9.4	33	10.5	42	7.4	42	7.2	42	10.0	47	7.8	47	9.2	52	8.5	100						
110	21	4.7	21	7.8	21	8.8	33	5.6	33	5.3	33	8.2	41	6.0	41	7.5	47	6.7	110						
120							23	4.2	23	3.9	23	6.8	34	4.6	34	5.9	42	5.3	120						
130													25	3.4	25	4.8	35	4.1	130						
140													11	2.4	11	3.7	27	2.9	140						
150																13	2.1	150							
Telescoping sequence %																									
Tel. 1	100	0	0	100	100	0	100	100	0	100	50	100	Tel. 1	Tel. 1	100	0	0	100	100	0	100	50	100	Tel. 1	
Tel. 2	100	100	50	100	100	100	100	100	100	100	100	100	Tel. 2	Tel. 2	100	100	50	100	100	100	100	100	100	Tel. 2	
Tel. 3	100	100	100	100	100	100	100	100	100	100	100	100	Tel. 3	Tel. 3	100	100	100	100	100	100	100	100	100	Tel. 3	
Tel. 4	50	100	100	50	100	100	100	100	100	100	100	100	Tel. 4	Tel. 4	50	100	100	50	100	100	100	100	100	Tel. 4	
Tel. 5	0	50	100	50	0	100	50	100	50	100	50	100	Tel. 5	Tel. 5	0	50	100	50	0	100	50	100	50	100	Tel. 5
Code	0 12 01 0	0 10 01 0	0 07 01 0	0 11 01 0	0 02 01 0	0 01 01 0	0 10 01 0	0 06 01 0	0 01 01 0	Code	Code	0 12 01 0	0 10 01 0	0 07 01 0	0 11 01 0	0 02 01 0	0 01 01 0	0 10 01 0	0 06 01 0	0 01 01 0	Code				

Operation and maintenance of this machine must be in compliance with the information provided in the "Operation and Maintenance Manual" supplied with this machine.

Working Radius (ft)		Load rating chart ATF 80-4																		Working Radius (ft)		
		Lifting capacities in 1,000 lbs according per SAE J765 on telescopic boom Counterweight 39,683 lbs On outriggers, 360° working area Outrigger base 16.40 ft																				
		Boom length (ft)																				
		35.4	47.9	47.9	60.0	60.0	60.0	60.0	72.5	72.5	72.5	35.4	47.9	47.9	60.0	60.0	60.0	60.0	72.5			72.5
9	70	170.5																				9
10	68	160.0	74	160.0	74	89.3	78	140.5	78	89.5	78	139.5	78	59.9	80	113.5	80	66.9	80	50.9	10	
12	64	142.0	71	142.5	71	84.3	76	138.0	76	86.0	76	130.5	76	56.8	79	107.5	79	63.3	79	50.9	12	
14	60	128.0	69	128.5	69	79.4	74	127.0	74	82.5	74	121.0	74	53.7	77	101.5	77	59.8	77	50.2	14	
16	56	113.5	66	114.0	66	74.4	71	114.0	71	79.0	71	111.5	71	50.6	75	95.6	75	56.3	75	48.6	16	
18	52	99.9	64	99.6	64	69.6	70	97.8	70	75.7	70	95.7	70	47.6	74	87.7	74	52.8	74	47.0	18	
20	47	83.1	61	82.4	61	64.9	68	81.1	68	72.2	68	79.0	68	44.5	72	78.8	72	49.3	72	45.4	20	
25	33	56.2	53	55.5	53	55.5	62	54.4	62	58.9	62	52.4	62	37.7	68	53.1	68	41.2	68	41.3	25	
30			44	40.2	44	43.3	56	39.1	56	44.6	56	37.4	56	32.5	64	38.0	64	35.5	64	36.3	30	
35			34	30.9	34	33.7	50	29.9	50	35.0	50	28.2	50	28.7	58	28.8	58	31.0	58	31.9	35	
40			19	24.4	19	27.2	43	23.7	43	28.5	43	22.1	43	25.7	53	22.6	53	27.4	53	28.2	40	
45							35	19.0	35	23.6	35	17.4	35	23.2	48	17.9	48	23.9	48	24.5	45	
50							22	15.3	22	19.8	22	13.8	22	20.0	42	14.2	42	20.3	42	20.9	50	
55															35	11.4	35	17.2	35	17.9	55	
60															26	9.1	26	14.6	26	15.5	60	
65															12	7.1	12	12.8	12	13.5	65	
70																					70	
75																					75	
80																					80	
85																					85	
90																					90	
95																					95	
100																					100	
110																					110	
120																					120	
130																					130	
Telescoping sequence %																						
Tel. 1	0	0	0	50	0	100	0	100	0	100	0	0	0	0	0	0	0	0	0	0	Tel. 1	
Tel. 2	0	50	0	50	0	0	0	0	50	0	0	0	0	0	0	0	0	0	0	0	Tel. 2	
Tel. 3	0	0	0	0	0	0	0	0	0	0	0	0	0	0	0	0	0	0	0	0	Tel. 3	
Tel. 4	0	0	0	0	50	0	0	0	0	0	0	0	0	0	100	50	0	0	0	0	Tel. 4	
Tel. 5	0	0	50	0	50	0	0	0	100	0	0	0	0	0	50	100	0	0	0	0	Tel. 5	
Code	0 XX 01 1	0 15 01 1	0 10 01 1	0 16 01 1	0 11 01 1	0 05 01 1	0 01 01 1	0 15 01 1	0 10 01 1	0 09 01 1	Code											

Operation and maintenance of this machine must be in compliance with the information provided in the "Operation and Maintenance Manual" supplied with this machine.



**Load rating chart ATF 80-4**

Lifting capacities in 1,000 lbs according per SAE J765 on telescopic boom


**Counterweight 39,683 lbs**

On outriggers, 360° working area

**Outrigger base 16.40 ft**

Working Radius (ft)	Boom length (ft)												Working Radius (ft)								
	85.0	85.0	85.0	97.4	97.4	97.4	109.9	109.9	109.9	109.9											
9															9						
10															10						
12															12						
14	79	81.5	79	62.5	79	44.6									14						
16	78	79.0	78	60.2	78	42.9									16						
18	77	76.4	77	57.7	77	41.3	79	61.9	79	47.5	79	40.9			18						
20	75	73.1	75	55.2	75	39.6	78	59.6	78	46.1	78	40.0	79	49.4	79	48.5	79	43.9	79	36.0	20
25	72	53.5	72	49.0	72	35.8	75	52.2	75	42.5	75	37.4	77	45.8	77	45.1	77	41.0	77	33.9	25
30	68	38.5	68	42.7	68	31.6	72	39.4	72	38.7	72	35.0	74	40.7	74	40.0	74	38.1	74	31.8	30
35	64	29.2	64	35.0	64	28.0	69	30.1	69	34.9	69	31.9	72	31.2	72	30.8	72	33.8	72	29.5	35
40	60	23.0	60	28.5	60	24.6	66	23.7	66	29.1	66	28.2	69	24.8	69	24.3	69	27.6	69	27.2	40
45	56	18.3	56	23.6	56	22.1	62	19.0	62	24.1	62	24.9	66	20.1	66	19.6	66	22.9	66	24.5	45
50	51	14.7	51	19.8	51	20.0	58	15.3	58	20.4	58	21.4	63	16.4	63	16.0	63	19.2	63	21.2	50
55	47	11.7	47	16.8	47	18.1	54	12.4	54	17.4	54	18.3	59	13.5	59	13.1	59	16.2	59	18.1	55
60	42	9.4	42	14.4	42	15.7	50	10.0	50	14.8	50	15.7	56	11.1	56	10.6	56	13.7	56	15.5	60
65	36	7.5	36	12.4	36	13.5	46	8.2	46	12.8	46	13.7	53	9.1	53	8.6	53	11.7	53	13.5	65
70	28	5.8	28	10.7	28	11.9	42	6.6	42	11.1	42	12.1	50	7.5	50	7.1	50	10.0	50	11.9	70
75	21	4.1	21	9.0	21	10.4	37	5.2	37	9.7	37	10.7	46	6.1	46	5.7	46	8.6	46	10.5	75
80							31	3.9	31	8.5	31	9.4	42	4.8	42	4.6	42	7.4	42	9.2	80
85							23	2.9	23	7.3	23	8.4	37	3.8	37	3.6	37	6.2	37	8.0	85
90													32	3.0	32	2.6	32	5.4	32	7.1	90
95													26	2.2	26	1.8	26	4.5	26	6.3	95
100													19	1.6	19	1.1	19	3.7	19	5.5	100
110																					110
120																					120
130																					130
Telescoping sequence %																					
Tel. 1	100	0	0	100	0	0	100	100	0	0	100	100	0	0	Tel. 1						
Tel. 2	100	0	0	100	0	0	100	100	100	100	100	0	0	Tel. 2							
Tel. 3	0	100	0	50	100	50	50	100	100	100	100	100	100	Tel. 3							
Tel. 4	0	50	100	0	100	100	50	0	50	100	100	100	100	Tel. 4							
Tel. 5	0	50	100	0	50	100	0	0	50	100	100	100	100	Tel. 5							
<b>Code</b>	<b>0 04 01 1</b>	<b>0 11 01 1</b>	<b>0 01 01 1</b>	<b>0 14 01 1</b>	<b>0 10 01 1</b>	<b>0 08 01 1</b>	<b>0 13 01 1</b>	<b>0 03 01 1</b>	<b>0 11 01 1</b>	<b>0 01 01 1</b>	<b>Code</b>										

Operation and maintenance of this machine must be in compliance with the information provided in the "Operation and Maintenance Manual" supplied with this machine.

 <b>Load rating chart ATF 80-4</b>																						
Lifting capacities in 1,000 lbs according per SAE J765 on telescopic boom <b>Counterweight 39,683 lbs</b> On outriggers, 360° working area <b>Outrigger base 16.40 ft</b>																						
Working Radius (ft)	Boom length (ft)										Working Radius (ft)											
	122.4	122.4	122.4	134.5	134.5	134.5	147.0	147.0	159.1													
	°	°	°	°	°	°	°	°	°	°												
9											9											
10											10											
12											12											
14											14											
16											16											
18											18											
20											20											
25	78	36.2	78	34.0	78	29.7	79	28.9	79	29.5	79	25.6								25		
30	76	34.0	76	32.0	76	28.5	78	28.8	78	29.4	78	25.4	79	23.1	79	21.4					30	
35	74	30.9	74	30.2	74	27.3	75	27.4	75	28.3	75	24.4	77	22.9	77	21.2	78	19.8			35	
40	72	25.2	72	28.1	72	26.2	74	25.7	74	26.1	74	23.5	75	22.2	75	20.9	77	19.8			40	
45	69	20.5	69	23.4	69	24.2	71	21.3	71	21.2	71	22.6	73	21.3	73	20.2	75	19.3			45	
50	67	16.9	67	19.6	67	20.9	69	17.8	69	17.5	69	20.0	71	18.3	71	18.8	73	17.9			50	
55	64	13.9	64	16.6	64	17.8	67	14.8	67	14.6	67	17.3	69	15.3	69	16.7	71	15.9			55	
60	61	11.5	61	14.2	61	15.3	65	12.4	65	12.2	65	14.8	68	12.8	68	14.2	70	13.5			60	
65	58	9.5	58	12.2	58	13.3	62	10.4	62	10.2	62	12.8	65	10.8	65	12.2	68	11.5			65	
70	55	7.9	55	10.4	55	11.5	59	8.8	59	8.6	59	11.1	63	9.3	63	10.6	66	9.9			70	
75	52	6.5	52	9.0	52	10.1	57	7.4	57	7.2	57	9.6	61	7.8	61	9.2	64	8.5			75	
80	49	5.3	49	7.9	49	9.0	54	6.1	54	5.9	54	8.3	58	6.6	58	7.9	61	7.2			80	
85	45	4.2	45	6.7	45	7.8	51	5.1	51	4.9	51	7.3	56	5.6	56	6.9	59	6.2			85	
90	41	3.4	41	5.8	41	6.9	48	4.1	48	3.9	48	6.5	53	4.7	53	5.9	57	5.2			90	
95	38	2.6	38	5.0	38	6.1	45	3.3	45	3.1	45	5.6	50	3.9	50	5.1	55	4.4			95	
100	33	1.8	33	4.2	33	5.3	42	2.7	42	2.4	42	4.9	47	3.1	47	4.4	52	3.8			100	
110			21	3.0	21	4.1	33	1.5	33	1.3	33	3.7	41	1.9	41	3.1	47	2.4			110	
120												23	2.5			34	2.1	42	1.4			120
130															25	1.2						130
Telescoping sequence %																						
Tel. 1	100	0	0	100	100	0	100	50	100	100	Tel. 1											
Tel. 2	100	100	50	100	100	100	100	100	100	100	Tel. 2											
Tel. 3	100	100	100	100	100	100	100	100	100	100	Tel. 3											
Tel. 4	50	100	100	50	100	100	100	100	100	100	Tel. 4											
Tel. 5	0	50	100	50	0	100	50	100	100	100	Tel. 5											
<b>Code</b>	<b>0 12 01 1</b>	<b>0 10 01 1</b>	<b>0 07 01 1</b>	<b>0 11 01 1</b>	<b>0 02 01 1</b>	<b>0 01 01 1</b>	<b>0 10 01 1</b>	<b>0 06 01 1</b>	<b>0 01 01 1</b>	<b>Code</b>												

Operation and maintenance of this machine must be in compliance with the information provided in the "Operation and Maintenance Manual" supplied with this machine.



**Load rating chart ATF 80-4**

Lifting capacities in 1,000 lbs according per SAE J765 on telescopic boom

**Counterweight 13,228 lbs**

On outriggers, 360° working area

**Outrigger base 23.62 ft**

Working Radius (ft)	Boom length (ft)												Working Radius (ft)								
	35.4		47.9		47.9		60.0		60.0		60.0			72.5		72.5		72.5			
	∠	°	∠	°	∠	°	∠	°	∠	°	∠	°		∠	°	∠	°	∠	°		
9	70	200.0*																	9		
10	68	157.0	74	155.0	74	89.3	78	140.5	78	89.5	78	139.5	78	59.9	80	113.5	80	66.9	80	50.9	10
12	64	132.5	71	132.0	71	84.3	76	131.5	76	86.0	76	128.0	76	56.8	79	107.5	79	63.3	79	50.9	12
14	60	113.0	69	113.0	69	79.4	74	112.5	74	82.5	74	111.0	74	53.7	77	101.5	77	59.8	77	50.2	14
16	56	98.8	66	98.8	66	74.4	71	98.0	71	79.0	71	96.5	71	50.6	75	95.6	75	56.3	75	48.6	16
18	52	88.1	64	87.6	64	69.6	70	86.9	70	75.7	70	85.7	70	47.6	74	86.2	74	52.8	74	47.0	18
20	47	78.4	61	77.6	61	64.9	68	76.9	68	72.2	68	75.9	68	44.5	72	76.4	72	49.3	72	45.4	20
25	33	59.9	53	60.1	53	56.0	62	58.3	62	60.9	62	56.4	62	37.7	68	57.0	68	41.2	68	41.3	25
30			44	44.1	44	47.2	56	42.1	56	48.5	56	40.4	56	32.5	64	41.0	64	35.5	64	36.3	30
35			34	33.6	34	36.6	50	32.0	50	37.9	50	30.3	50	28.7	58	30.9	58	31.0	58	31.9	35
40			19	26.5	19	29.4	43	25.2	43	30.6	43	23.6	43	25.7	53	24.1	53	27.4	53	28.3	40
45							35	20.1	35	25.4	35	18.6	35	23.2	48	19.0	48	24.6	48	25.4	45
50							22	16.2	22	21.3	22	14.5	22	20.8	42	15.1	42	21.4	42	22.3	50
55															35	11.8	35	18.4	35	19.3	55
60															26	9.1	26	15.7	26	16.6	60
65															12	6.9	12	13.5	12	14.4	65
70																					70
75																					75
80																					80
85																					85
90																					90
95																					95
100																					100
110																					110
120																					120
130																					130
Telescoping sequence %																					
Tel. 1	0	0	0	50	0	100	0	100	0	0	0	Tel. 1									
Tel. 2	0	50	0	50	0	0	0	50	0	0	0	Tel. 2									
Tel. 3	0	0	0	0	0	0	0	0	0	0	0	Tel. 3									
Tel. 4	0	0	0	0	50	0	0	0	100	50	0	Tel. 4									
Tel. 5	0	0	50	0	50	0	100	0	50	100	0	Tel. 5									
<b>Code</b>	<b>0 XX 04 0</b>	<b>0 15 04 0</b>	<b>0 10 04 0</b>	<b>0 16 04 0</b>	<b>0 11 04 0</b>	<b>0 05 04 0</b>	<b>0 01 04 0</b>	<b>0 15 04 0</b>	<b>0 10 04 0</b>	<b>0 09 04 0</b>	<b>Code</b>										

\* Over rear with superstructure swing lock pin engaged and additional equipment, Code 0 01 04 5

Operation and maintenance of this machine must be in compliance with the information provided in the "Operation and Maintenance Manual" supplied with this machine.

Working Radius (ft)		Load rating chart ATF 80-4										Working Radius (ft)									
		Lifting capacities in 1,000 lbs according per SAE J765 on telescopic boom Counterweight 13,228 lbs On outriggers, 360° working area Outrigger base 23.62 ft																			
		Boom length (ft)																			
		85.0		85.0		85.0		97.		97.4		97.4		109.9		109.9		109.9		109.9	
		°	°	°	°	°	°	°	°	°	°	°	°	°	°	°	°	°	°	°	°
		∠	∠	∠	∠	∠	∠	∠	∠	∠	∠	∠	∠	∠	∠	∠	∠	∠	∠	∠	∠
9																					9
10																					10
12																					12
14	79	81.5	79	62.5	79	44.6															14
16	78	79.0	78	60.2	78	42.9															16
18	77	76.4	77	57.7	77	41.3	79	61.9	79	47.5	79	40.9									18
20	75	73.4	75	55.2	75	39.6	78	59.6	78	46.1	78	40.0	79	49.4	79	48.5	79	43.9	79	36.0	20
25	72	57.3	72	49.0	72	35.8	75	54.1	75	42.5	75	37.4	77	45.8	77	45.1	77	41.0	77	33.9	25
30	68	41.5	68	42.9	68	31.6	72	42.4	72	38.7	72	35.0	74	41.9	74	41.1	74	38.1	74	31.8	30
35	64	31.2	64	37.2	64	28.0	69	32.3	69	34.9	69	31.9	72	33.4	72	32.6	72	35.6	72	29.5	35
40	60	24.5	60	30.8	60	24.6	66	25.4	66	30.5	66	28.3	69	26.5	69	26.0	69	30.0	69	27.3	40
45	56	19.5	56	25.5	56	22.1	62	20.3	62	25.8	62	25.3	66	21.4	66	21.0	66	24.6	66	25.1	45
50	51	15.5	51	21.3	51	20.0	58	16.4	58	21.9	58	22.4	63	17.6	63	17.1	63	20.6	63	22.2	50
55	47	12.2	47	18.0	47	18.2	54	13.1	54	18.6	54	19.5	59	14.4	59	13.8	59	17.3	59	19.3	55
60	42	9.5	42	15.2	42	16.6	50	10.4	50	15.9	50	16.8	56	11.5	56	11.1	56	14.6	56	16.6	60
65	36	7.3	36	13.1	36	14.4	46	8.2	46	13.7	46	14.6	53	9.3	53	8.9	53	12.4	53	14.4	65
70	28	5.6	28	11.3	28	12.6	42	6.5	42	11.8	42	12.9	50	7.6	50	7.1	50	10.7	50	12.6	70
75	21	3.9	21	9.6	21	11.0	37	4.9	37	10.3	37	11.3	46	6.0	46	5.5	46	9.2	46	11.1	75
80							31	3.5	31	9.0	31	9.9	42	4.6	42	4.2	42	7.9	42	9.6	80
85							23	2.5	23	7.8	23	8.9	37	3.4	37	3.1	37	6.7	37	8.4	85
90													32	2.5	32	2.1	32	5.7	32	7.6	90
95													26	1.8	26	1.1	26	4.9	26	6.7	95
100													19	1.1			19	4.2	19	5.9	100
110																					110
120																					120
130																					130
Telescoping sequence %																					
Tel. 1	100	0	0	100	0	0	100	100	0	0	100	100	0	0	Tel. 1						
Tel. 2	100	0	0	100	0	0	100	100	100	0	100	100	100	0	Tel. 2						
Tel. 3	0	100	0	50	100	50	50	100	100	100	100	100	100	100	Tel. 3						
Tel. 4	0	50	100	0	100	100	50	0	50	100	100	0	50	100	Tel. 4						
Tel. 5	0	50	100	0	50	100	0	0	0	50	100	0	100	100	Tel. 5						
Code	0 04 04 0	0 11 04 0	0 01 04 0	0 14 04 0	0 10 04 0	0 08 04 0	0 13 04 0	0 03 04 0	0 11 04 0	0 01 04 0	Code										

Operation and maintenance of this machine must be in compliance with the information provided in the "Operation and Maintenance Manual" supplied with this machine.

Working Radius (ft)		Load rating chart ATF 80-4										Working Radius (ft)								
		Lifting capacities in 1,000 lbs according per SAE J765 on telescopic boom Counterweight 13,228 lbs On outriggers, 360° working area Outrigger base 23.62 ft																		
		Boom length (ft)																		
		122.4		122.4		122.4		134.5		134.5				147.0		159.11				
		°	°	°	°	°	°	°	°	°	°	°	°	°	°					
9															9					
10															10					
12															12					
14															14					
16															16					
18															18					
20															20					
25	78	36.2	78	34.0	78	29.7	79	28.9	79	29.5	79	25.6			25					
30	76	34.0	76	32.0	76	28.5	78	28.8	78	29.4	78	25.4	79	23.1	79	21.4		30		
35	74	31.8	74	30.2	74	27.3	75	27.4	75	28.3	75	24.4	77	22.9	77	21.2	78	19.8	35	
40	72	26.9	72	28.2	72	26.3	74	25.8	74	26.8	74	23.5	75	22.2	75	20.9	77	19.8	40	
45	69	21.7	69	24.9	69	25.1	71	22.3	71	22.2	71	22.6	73	21.3	73	20.2	75	19.3	45	
50	67	17.9	67	21.1	67	22.0	69	18.9	69	18.7	69	20.8	71	18.8	71	19.4	73	18.5	50	
55	64	14.7	64	17.7	64	18.9	67	15.8	67	15.5	67	18.4	69	16.2	69	17.4	71	16.6	55	
60	61	11.9	61	15.0	61	16.3	65	13.0	65	12.6	65	15.7	68	13.7	68	14.6	70	13.9	60	
65	58	9.7	58	12.8	58	14.2	62	10.7	62	10.4	62	13.5	65	11.3	65	12.8	68	11.9	65	
70	55	8.0	55	11.1	55	12.3	59	8.9	59	8.7	59	11.8	63	9.6	63	10.9	66	10.2	70	
75	52	6.4	52	9.6	52	10.7	57	7.4	57	7.2	57	10.3	61	8.0	61	9.3	64	8.6	75	
80	49	5.0	49	8.3	49	9.4	54	6.1	54	5.9	54	9.0	58	6.5	58	7.9	61	7.2	80	
85	45	3.8	45	7.1	45	8.2	51	4.9	51	4.7	51	7.8	56	5.4	56	6.9	59	6.2	85	
90	41	3.0	41	6.1	41	7.2	48	4.1	48	3.7	48	6.8	53	4.5	53	5.9	57	5.2	90	
95	38	2.1	38	5.3	38	6.3	45	3.1	45	2.8	45	5.9	50	3.6	50	5.0	55	4.3	95	
100	33	1.3	33	4.6	33	5.5	42	2.2	42	2.0	42	5.1	47	2.7	47	4.1	52	3.5	100	
110			21	3.2	21	4.3						33	3.9	41	1.5	41	2.8	47	2.1	110
120												23	2.7			34	1.9	42	1.1	120
130																25	1.2			130
Telescoping sequence %																				
Tel. 1	100	0	0	100	100	0	100	50	100	Tel. 1										
Tel. 2	100	100	50	100	100	100	100	100	100	Tel. 2										
Tel. 3	100	100	100	100	100	100	100	100	100	Tel. 3										
Tel. 4	50	100	100	50	100	100	100	100	100	Tel. 4										
Tel. 5	0	50	100	50	0	100	50	100	100	Tel. 5										
Code	0 12 04 0	0 10 04 0	0 07 04 0	0 11 04 0	0 02 04 0	0 01 04 0	0 10 04 0	0 06 04 0	0 01 04 0	Code										

Operation and maintenance of this machine must be in compliance with the information provided in the "Operation and Maintenance Manual" supplied with this machine.

Working Radius (ft)		Load rating chart ATF 80-4																Working Radius (ft)				
		Lifting capacities in 1,000 lbs according per SAE J765 on telescopic boom Counterweight 13,228 lbs On outriggers, 360° working area Outrigger base 16.40 ft																				
		Boom length (ft)																				
		35.4		47.9		47.9		60.0		60.0		60.0		60.0		72.5				72.5		72.5
		°	°	°	°	°	°	°	°	°	°	°	°	°	°	°	°	°	°	°	°	°
9	70	167.0																				9
10	68	157.0	74	157.5	74	89.3	78	140.5	78	89.5	78	139.5	78	59.9	80	113.5	80	66.9	80	50.9		10
12	64	138.0	71	138.0	71	84.3	76	135.0	76	86.0	76	129.5	76	56.8	79	107.5	79	63.3	79	50.9		12
14	60	111.5	69	111.0	69	79.4	74	108.5	74	82.5	74	106.5	74	53.7	77	99.0	77	59.8	77	50.2		14
16	56	84.1	66	83.4	66	74.4	71	81.6	71	79.0	71	78.9	71	50.6	75	79.8	75	56.3	75	48.6		16
18	52	67.0	64	66.4	64	65.8	70	64.8	70	69.1	70	62.4	70	47.6	74	63.2	74	52.8	74	47.0		18
20	47	52.9	61	52.2	61	56.4	68	50.9	68	58.1	68	48.7	68	44.5	72	49.4	72	49.3	72	45.4		20
25	33	34.7	53	34.1	53	37.5	62	32.9	62	39.0	62	30.9	62	37.3	68	31.6	68	39.0	68	39.3		25
30			44	23.6	44	26.7	56	22.7	56	28.2	56	20.9	56	28.4	64	21.4	64	28.6	64	29.5		30
35			34	17.3	34	20.2	50	16.4	50	21.5	50	14.8	50	21.7	58	15.3	58	22.0	58	22.8		35
40			19	12.9	19	15.8	43	12.2	43	17.0	43	10.6	43	17.2	53	11.1	53	17.4	53	18.3		40
45							35	9.0	35	13.6	35	7.4	35	13.9	48	7.9	48	14.1	48	15.0		45
50							22	6.5	22	11.1	22	5.1	22	11.3	42	5.5	42	11.5	42	12.3		50
55															35	3.6	35	9.4	35	10.1		55
60															26	1.9	26	7.7	26	8.3		60
65																	12	6.3	12	7.0		65
70																						70
75																						75
80																						80
85																						85
90																						90
95																						95
100																						100
Telescoping sequence %																						
Tel. 1	0	0	0	50	0	100	0	100	0	0	0	0	0	0	0	0	0	0	0	0	Tel. 1	
Tel. 2	0	50	0	50	0	0	0	50	0	0	0	0	0	0	0	0	0	0	0	0	Tel. 2	
Tel. 3	0	0	0	0	0	0	0	0	0	0	0	0	0	0	0	0	0	0	0	0	Tel. 3	
Tel. 4	0	0	0	0	50	0	0	0	50	0	0	0	0	0	100	50	0	0	0	0	Tel. 4	
Tel. 5	0	0	50	0	50	0	0	50	0	0	100	0	0	0	50	100	0	0	0	0	Tel. 5	
Code	0 XX 04 1	015 04 1	0 10 04 1	0 16 04 1	0 11 04 1	0 05 04 1	0 01 04 1	0 15 04 1	0 10 04 1	0 09 04 1	Code											

Operation and maintenance of this machine must be in compliance with the information provided in the "Operation and Maintenance Manual" supplied with this machine.



**Load rating chart ATF 80-4**

Lifting capacities in 1,000 lbs according per SAE J765 on telescopic boom

**Counterweight 13,228 lbs**  
**On outriggers, 360° working area**  
**Outrigger base 16,40 ft**

Working Radius (ft)	Boom length (ft)												Working Radius (ft)									
	85.0		85.0		85.0		97.		97.4		97.4			109.9		109.9		109.9				
9																			9			
10																			10			
12																			12			
14	79	81.5	79	62.5	79	44.6													14			
16	78	76.5	78	60.2	78	42.9													16			
18	77	63.5	77	57.7	77	41.3	79	58.2	79	47.5	79	40.9							18			
20	75	49.8	75	54.5	75	39.6	78	51.1	78	46.1	78	40.0	79	48.7	79	47.8	79	43.9	79	36.0	20	
25	72	32.0	72	39.0	72	35.8	75	33.1	75	39.2	75	37.4	77	34.5	77	33.9	77	37.3	77	33.9	25	
30	68	21.9	68	28.2	68	29.7	72	22.9	72	28.8	72	30.1	74	24.0	74	23.6	74	27.3	74	29.7	30	
35	64	15.7	64	21.5	64	23.1	69	16.6	69	22.2	69	23.3	72	17.7	72	17.3	72	20.6	72	22.9	35	
40	60	11.5	60	17.0	60	18.5	66	12.4	66	17.7	66	18.7	69	13.3	69	13.0	69	16.3	69	18.3	40	
45	56	8.3	56	13.6	56	15.0	62	9.2	62	14.3	62	15.2	66	10.1	66	9.7	66	13.0	66	15.0	45	
50	51	5.9	51	11.1	51	12.4	58	6.7	58	11.6	58	12.6	63	7.7	63	7.3	63	10.4	63	12.4	50	
55	47	4.0	47	9.0	47	10.3	54	4.7	54	9.5	54	10.5	59	5.7	59	5.3	59	8.3	59	10.3	55	
60	42	2.4	42	7.2	42	8.6	50	3.1	50	7.9	50	8.8	56	3.9	56	3.7	56	6.6	56	8.5	60	
65	36	1.0	36	5.9	36	7.2	46	1.7	46	6.4	46	7.4	53	2.6	53	2.4	53	5.2	53	7.0	65	
70			28	4.8	28	6.0			42	5.3	42	6.2	50	1.5	50	1.0	50	4.2	50	6.0	70	
75			21	3.8	21	4.8			37	4.3	37	5.3					46	3.2	46	4.9	75	
80									31	3.4	31	4.4					42	2.3	42	4.0	80	
85									23	2.7	23	3.6					37	1.6	37	3.3	85	
90																				32	2.7	90
95																				26	2.1	95
100																				19	1.6	100
Telescoping sequence %																						
Tel. 1	100	0	0	100	0	0	100	0	0	100	100	0	0	Tel. 1								
Tel. 2	100	0	0	100	0	0	100	0	0	100	100	100	0	Tel. 2								
Tel. 3	0	100	0	50	100	50	50	100	100	100	100	100	100	Tel. 3								
Tel. 4	0	50	100	0	100	100	50	0	50	100	100	100	100	Tel. 4								
Tel. 5	0	50	100	0	50	100	0	50	100	0	0	50	100	Tel. 5								
<b>Code</b>	<b>0 04 04 1</b>	<b>0 11 04 1</b>	<b>0 01 04 1</b>	<b>0 14 04 1</b>	<b>0 10 04 1</b>	<b>0 08 04 1</b>	<b>0 13 04 1</b>	<b>0 03 04 1</b>	<b>0 11 04 1</b>	<b>0 01 04 1</b>	<b>0 01 04 1</b>	<b>0 01 04 1</b>	<b>0 01 04 1</b>	<b>Code</b>								

Operation and maintenance of this machine must be in compliance with the information provided in the "Operation and Maintenance Manual" supplied with this machine.

Working Radius (ft)		Load rating chart ATF 80-4										Working Radius (ft)							
		Lifting capacities in 1,000 lbs according per SAE J765 on telescopic boom Counterweight 13,228 lbs On outriggers, 360° working area Outrigger base 16.40 ft																	
		Boom length (ft)																	
		122.4		122.4		122.4		134.5		134.5		134.5		147.0		147.0		159.11	
		∠		∠		∠		∠		∠		∠		∠		∠		∠	
9																			9
10																			10
12																			12
14																			14
16																			16
18																			18
20																			20
25	78	33.6	78	34.0	78	29.7	79	28.9	79	29.5	79	25.6							25
30	76	24.7	76	28.0	76	28.2	78	25.8	78	25.3	78	25.4	79	23.0	79	21.4			30
35	74	18.1	74	21.3	74	22.6	75	19.2	75	18.9	75	22.0	77	19.8	77	20.6	78	19.5	35
40	72	13.9	72	16.8	72	18.1	74	14.8	74	14.6	74	17.4	75	15.4	75	17.0	77	16.1	40
45	69	10.5	69	13.4	69	14.7	71	11.6	71	11.2	71	14.1	73	12.1	73	13.6	75	12.8	45
50	67	8.1	67	10.9	67	12.1	69	9.1	69	8.8	69	11.5	71	9.6	71	11.1	73	10.2	50
55	64	6.1	64	8.8	64	10.0	67	7.0	67	6.8	67	9.4	69	7.5	69	9.0	71	8.1	55
60	61	4.4	61	7.0	61	8.3	65	5.3	65	5.0	65	7.7	68	5.9	68	7.2	70	6.4	60
65	58	3.0	58	5.7	58	6.8	62	3.9	62	3.7	62	6.3	65	4.6	65	5.9	68	5.0	65
70	55	2.0	55	4.6	55	5.7	59	2.9	59	2.6	59	5.1	63	3.4	63	4.7	66	4.0	70
75			52	3.6	52	4.7	57	2.0	57	1.7	57	4.2	61	2.4	61	3.7	64	3.1	75
80			49	2.7	49	3.8	54	1.1			54	3.4	58	1.6	58	2.9	61	2.2	80
85			45	2.0	45	3.1					51	2.7			56	2.0	59	1.4	85
90			41	1.4	41	2.5					48	2.0			53	1.5			90
95					38	1.9					45	1.4			50	1.0			95
100					33	1.4													100
Telescoping sequence %																			
Tel. 1	100	0	0	100	100	0	100	50	100	Tel. 1									
Tel. 2	100	100	50	100	100	100	100	100	100	Tel. 2									
Tel. 3	100	100	100	100	100	100	100	100	100	Tel. 3									
Tel. 4	50	100	100	50	100	100	100	100	100	Tel. 4									
Tel. 5	0	50	100	50	0	100	50	100	100	Tel. 5									
Code	0 12 04 1	0 10 04 1	0 07 04 1	0 11 04 1	0 02 04 1	0 01 04 1	0 10 04 1	0 06 04 1	0 01 04 1	Code									

Operation and maintenance of this machine must be in compliance with the information provided in the "Operation and Maintenance Manual" supplied with this machine.





**Load rating chart ATF 80-4**

Lifting capacities in 1,000 lbs according per SAE J765, at telescopic boom

**Counterweight 0 lbs**


On outriggers, 360° working area

**Outrigger base 23.62 ft**

Working Radius (ft)	Boom length (ft)										Working Radius (ft)													
	85.0		85.0		85.0		97.4		97.4			109.9												
	°	°	°	°	°	°	°	°	°	°		°	°											
9																						9		
10																							10	
12																							12	
14	79	81.5	79	62.5	79	44.6																	14	
16	78	79.0	78	60.2	78	42.9																	16	
18	77	74.8	77	57.7	77	41.3	79	61.9	79	47.5	79	40.9											18	
20	75	69.3	75	55.2	75	39.6	78	59.4	78	46.1	78	40.0	79	49.4	79	48.5	79	43.9	79	36.0			20	
25	72	45.5	72	49.0	72	35.8	75	46.6	75	42.5	75	37.4	77	44.6	77	44.0	77	41.0	77	33.9			25	
30	68	31.5	68	38.1	68	31.6	72	32.4	72	38.2	72	35.0	74	34.0	74	33.3	74	37.2	74	31.8			30	
35	64	22.8	64	29.2	64	28.0	69	23.7	69	29.9	69	30.9	72	25.1	72	24.6	72	28.4	72	29.5			35	
40	60	16.9	60	23.0	60	24.4	66	17.9	66	23.7	66	25.0	69	19.3	69	18.8	69	22.2	69	24.6			40	
45	56	12.5	56	18.5	56	20.0	62	13.4	62	19.1	62	20.3	66	14.7	66	14.3	66	17.8	66	20.0			45	
50	51	9.1	51	15.3	51	16.6	58	10.1	58	15.7	58	16.8	63	11.3	63	10.9	63	14.4	63	16.6			50	
55	47	6.4	47	12.6	47	13.9	54	7.4	54	13.0	54	14.1	59	8.6	59	8.2	59	11.6	59	13.9			55	
60	42	4.3	42	10.2	42	11.8	50	5.2	50	10.9	50	12.0	56	6.5	56	6.1	56	9.4	56	11.8			60	
65	36	2.6	36	8.4	36	9.9	46	3.5	46	9.0	46	10.1	53	4.6	53	4.4	53	7.7	53	9.9			65	
70			28	7.0	28	8.4	42	2.3	42	7.6	42	8.6	50	3.2	50	2.9	50	6.2	50	8.4			70	
75			21	5.6	21	6.9	37	1.1	37	6.3	37	7.4	46	2.1	46	1.4	46	4.9	46	7.1			75	
80										31	5.1	31	6.4	42	1.1			42	3.9	42	6.1			80
85										23	4.2	23	5.4					37	2.9	37	4.9			85
90																		32	2.2	32	4.2			90
95																		26	1.6	26	3.4			95
100																					19	2.6		100
110																								110
Telescoping sequence %																								
Tel. 1	100	0	0	100	0	0	100	100	0	0	100	100	0	0	Tel. 1									
Tel. 2	100	0	0	100	0	0	100	100	100	0	100	100	100	0	Tel. 2									
Tel. 3	0	100	0	50	100	50	50	100	100	100	100	100	100	100	Tel. 3									
Tel. 4	0	50	100	0	100	100	50	0	50	100	100	100	100	100	Tel. 4									
Tel. 5	0	50	100	0	50	100	0	50	100	0	0	50	100	100	Tel. 5									
Code	0 04 05 0	0 11 05 0	0 01 05 0	0 14 05 0	0 10 05 0	0 08 05 0	0 13 05 0	0 03 05 0	0 11 05 0	0 01 05 0	Code													

Operation and maintenance of this machine must be in compliance with the information provided in the "Operation and Maintenance Manual" supplied with this machine.




 <b>Load rating chart ATF 80-4</b>										
Lifting capacities in 1,000 lbs according per SAE J765 at telescopic boom Counterweight 39,683 lbs On tire, over rear										
Working Radius (ft)	Boom length (ft)									Working Radius (ft)
	35.4			47.9			60.0			
	∠	°	**	∠	°	**	∠	°	**	
10	68		40.5	74		41.0	78		41.0	10
12	64		36.3	71		36.9	76		37.2	12
14	60		32.6	69		33.4	74		33.7	14
16	56		29.5	66		30.4	71		30.7	16
18	52		26.8	64		27.8	70		28.3	18
20	47		24.4	61		25.5	68		25.9	20
25	33		19.6	53		20.8	62		21.4	25
30				44		17.2	56		18.0	30
35				34		14.5	50		15.5	35
40				19		12.3	43		13.4	40
45							35		11.0	45
50							22		9.1	50
Telescoping sequence %										
Tel. 1	0			0			0			Tel. 1
Tel. 2	0			0			0			Tel. 2
Tel. 3	0			0			0			Tel. 3
Tel. 4	0			0			0			Tel. 4
Tel. 5	0			50			100			Tel. 5
<b>Code</b>	<b>0 XX 01 6</b>			<b>0 10 01 6</b>			<b>0 01 01 6</b>			<b>Code</b>

\*\* Over rear with superstructure swing lock pin engaged.

Operation and maintenance of this machine must be in compliance with the information provided in the "Operation and Maintenance Manual" supplied with this machine.

05-22-2003

99707788728


 <b>Load rating chart ATF 80-4</b>										
Lifting capacities in 1,000 lbs according per SAE J765 on telescopic boom <b>Counterweight 13,228 lbs</b> <b>On tire, over rear</b>										
Working Radius (ft)	Boom length (ft)									Working Radius (ft)
	35.4			47.9			60.0			
	∠	°	**	∠	°	**	∠	°	**	
10	68	42.5		74	43.0		78	43.0		10
12	64	38.2		71	38.6		76	38.9		12
14	60	33.9		69	35.0		74	35.2		14
16	56	29.0		66	31.2		71	32.1		16
18	52	24.6		64	26.9		70	28.1		18
20	47	20.5		61	22.7		68	24.0		20
25	33	13.9		53	16.0		62	17.2		25
30				44	11.6		56	12.7		30
35				34	8.5		50	9.6		35
40				19	6.4		43	7.5		40
45							35	5.6		45
50							22	4.2		50
Telescoping sequence %										
Tel. 1		0			0			0		Tel. 1
Tel. 2		0			0			0		Tel. 2
Tel. 3		0			0			0		Tel. 3
Tel. 4		0			0			0		Tel. 4
Tel. 5		0			50			100		Tel. 5
<b>Code</b>	<b>0 XX 04 6</b>			<b>0 10 04 6</b>				<b>0 01 04 6</b>		<b>Code</b>

\*\* Over rear with superstructure swing lock pin engaged.

Operation and maintenance of this machine must be in compliance with the information provided in the "Operation and Maintenance Manual" supplied with this machine.

05-22-2003

99707788868

 <b>TADANO</b>		<b>Load rating chart ATF 80-4</b>							
Working Radius (ft)		Lifting capacities in 1,000 lbs according per SAE J765 at telescopic boom Counterweight 0 lbs On tire, over rear						Working Radius (ft)	
		Boom length (ft)							
		35.4		47.9		60.0			
	°	**		°	**		°	**	
10	68	42.0		74	42.5		78	43.0	10
12	64	33.3		71	36.1		76	37.5	12
14	60	26.0		69	28.4		74	29.9	14
16	56	20.8		66	23.0		71	24.5	16
18	52	17.2		64	19.3		70	20.7	18
20	47	13.9		61	16.0		68	17.3	20
25	33	8.7		53	10.8		62	11.9	25
30				44	7.2		56	8.3	30
35				34	4.8		50	6.0	35
40				19	3.1		43	4.2	40
45							35	2.9	45
50							22	1.7	50
Telescoping sequence %									
Tel. 1		0		0		0		0	Tel. 1
Tel. 2		0		0		0		0	Tel. 2
Tel. 3		0		0		0		0	Tel. 3
Tel. 4		0		0		0		0	Tel. 4
Tel. 5		0		50		100		100	Tel. 5
<b>Code</b>	<b>0 XX 05 6</b>			<b>0 10 05 6</b>		<b>0 01 05 6</b>			<b>Code</b>

\*\* Over rear with superstructure swing lock pin engaged.

Operation and maintenance of this machine must be in compliance with the information provided in the "Operation and Maintenance Manual" supplied with this machine.

10-28-2003

99707788730



**Load rating chart ATF 80-4**

Lifting capacities in 1,000 lbs according per SAE J765, at fly jib 29.5 ft / 52.5 ft

Counterweight 39,683 lbs

On outriggers, 360° working area

Outrigger base 23.62 ft

Working Radius (ft)	Boom length 35.4 ft to 147.0 ft												Boom length 147.0 ft to 159.1 ft												Boom length 35.4 ft to 159.1 ft											
	Fly jib 29.5 ft offset				Fly jib 29.5 ft offset				Fly jib 29.5 ft offset				Fly jib 29.5 ft offset				Fly jib 52.5 ft offset				Fly jib 52.5 ft offset				Fly jib 52.5 ft offset											
	5°	20°	40°		5°	20°	40°		5°	20°	40°		5°	20°	40°		5°	20°	40°		5°	20°	40°		5°	20°	40°		5°	20°	40°					
35	79	13.9		79	13.0			79	13.0			79	13.0			79	13.0			79	13.0			79	13.0			79	13.0							
40	78	13.4	80	9.0	78	12.9	80	9.0	78	12.9	80	9.0	78	12.9	80	9.0	78	12.9	80	9.0	78	12.9	80	9.0	78	12.9	80	9.0	78	12.9	80	9.0				
45	76	12.7	78	8.6	76	12.4	78	8.6	76	12.4	78	8.6	76	12.4	78	8.6	76	12.4	78	8.6	76	12.4	78	8.6	76	12.4	78	8.6	76	12.4	78	8.6				
50	75	12.2	77	8.2	75	12.0	77	8.2	75	12.0	77	8.2	75	12.0	77	8.2	75	12.0	77	8.2	75	12.0	77	8.2	75	12.0	77	8.2	75	12.0	77	8.2				
55	73	11.7	75	7.8	73	11.5	75	7.8	73	11.5	75	7.8	73	11.5	75	7.8	73	11.5	75	7.8	73	11.5	75	7.8	73	11.5	75	7.8	73	11.5	75	7.8				
60	72	11.1	74	7.4	70	11.0	74	7.4	70	11.0	74	7.4	70	11.0	74	7.4	70	11.0	74	7.4	70	11.0	74	7.4	70	11.0	74	7.4	70	11.0	74	7.4				
65	70	10.4	72	7.2	69	10.4	72	7.2	69	10.4	72	7.2	69	10.4	72	7.2	69	10.4	72	7.2	69	10.4	72	7.2	69	10.4	72	7.2	69	10.4	72	7.2				
70	69	9.9	71	6.9	69	9.9	71	6.9	69	9.9	71	6.9	69	9.9	71	6.9	69	9.9	71	6.9	69	9.9	71	6.9	69	9.9	71	6.9	69	9.9	71	6.9				
75	67	9.4	69	6.7	67	9.4	69	6.7	67	9.4	69	6.7	67	9.4	69	6.7	67	9.4	69	6.7	67	9.4	69	6.7	67	9.4	69	6.7	67	9.4	69	6.7				
80	65	8.8	67	6.5	65	8.8	67	6.5	65	8.8	67	6.5	65	8.8	67	6.5	65	8.8	67	6.5	65	8.8	67	6.5	65	8.8	67	6.5	65	8.8	67	6.5				
85	63	8.4	65	6.3	63	8.4	65	6.3	63	8.4	65	6.3	63	8.4	65	6.3	63	8.4	65	6.3	63	8.4	65	6.3	63	8.4	65	6.3	63	8.4	65	6.3				
90	62	8.0	64	6.0	62	8.0	64	6.0	62	8.0	64	6.0	62	8.0	64	6.0	62	8.0	64	6.0	62	8.0	64	6.0	62	8.0	64	6.0	62	8.0	64	6.0				
95	60	7.6	62	5.8	60	7.6	62	5.8	60	7.6	62	5.8	60	7.6	62	5.8	60	7.6	62	5.8	60	7.6	62	5.8	60	7.6	62	5.8	60	7.6	62	5.8				
100	58	7.3	60	5.7	58	7.3	60	5.7	58	7.3	60	5.7	58	7.3	60	5.7	58	7.3	60	5.7	58	7.3	60	5.7	58	7.3	60	5.7	58	7.3	60	5.7				
110	54	6.2	56	5.4	54	6.2	56	5.4	54	6.2	56	5.4	54	6.2	56	5.4	54	6.2	56	5.4	54	6.2	56	5.4	54	6.2	56	5.4	54	6.2	56	5.4				
120	49	4.7	51	5.0	49	5.8	51	5.2	49	5.8	51	5.2	49	5.8	51	5.2	49	5.8	51	5.2	49	5.8	51	5.2	49	5.8	51	5.2	49	5.8	51	5.2				
130	44	3.5	46	3.7	44	4.6	46	4.7	44	4.6	46	4.7	44	4.6	46	4.7	44	4.6	46	4.7	44	4.6	46	4.7	44	4.6	46	4.7	44	4.6	46	4.7				
140	38	2.4	40	2.5	38	3.4	40	3.6	38	3.4	40	3.6	38	3.4	40	3.6	38	3.4	40	3.6	38	3.4	40	3.6	38	3.4	40	3.6	38	3.4	40	3.6				
150	32	1.4	33	1.5	32	2.5	33	2.6	32	2.5	33	2.6	32	2.5	33	2.6	32	2.5	33	2.6	32	2.5	33	2.6	32	2.5	33	2.6	32	2.5	33	2.6				
160					23	1.7	24	1.7	22	1.6																										
170																																				

Telescoping sequence %

Tel. 1	100	50	100	100	100	100	100	100	100	100	100	100	100	100	100	100	100	100	100	100	100	100	100	100	100	100	100	100	100	100	100	100	Tel. 1
Tel. 2	100	100	100	100	100	100	100	100	100	100	100	100	100	100	100	100	100	100	100	100	100	100	100	100	100	100	100	100	100	100	100	100	Tel. 2
Tel. 3	100	100	100	100	100	100	100	100	100	100	100	100	100	100	100	100	100	100	100	100	100	100	100	100	100	100	100	100	100	100	100	100	Tel. 3
Tel. 4	100	100	100	100	100	100	100	100	100	100	100	100	100	100	100	100	100	100	100	100	100	100	100	100	100	100	100	100	100	100	100	100	Tel. 4
Tel. 5	50	50	50	50	50	50	50	50	50	50	50	50	50	50	50	50	50	50	50	50	50	50	50	50	50	50	50	50	50	50	50	Tel. 5	
Code	1 02 01 0	1 02 01 1	1 02 01 2	1 16 01 0	1 16 01 1	1 16 01 2	1 16 01 0	1 16 01 1	1 16 01 2	1 16 01 0	1 16 01 1	1 16 01 2	1 16 01 0	1 16 01 1	1 16 01 2	1 16 01 0	1 16 01 1	1 16 01 2	1 16 01 0	1 16 01 1	1 16 01 2	1 16 01 0	1 16 01 1	1 16 01 2	1 16 01 0	1 16 01 1	1 16 01 2	1 16 01 0	1 16 01 1	1 16 01 2	Code		

Operation and maintenance of this machine must be in compliance with the information provided in the "Operation and Maintenance Manual" supplied with this machine.



**Load rating chart ATF 80-4**

Lifting capacities in 1,000 lbs according per SAE J765, at fly jib 29.5 ft / 52.5 ft

**Counterweight 39,683 lbs**

On outriggers, 360° working area

**Outrigger base 16.40 ft**

Working Radius (ft)

Working Radius (ft)

Boom length 35.4 ft to 147.0 ft      Boom length 35.4 ft to 159.1 ft      Boom length 147.0 ft to 159.1 ft

Fly jib 29.5 ft offset

Fly jib 29.5 ft offset

Fly jib 29.5 ft offset

Fly jib 52.5 ft offset

Working Radius (ft)	5°			20°			40°			5°			20°			40°			5°			20°			40°		
	79	80	81	79	80	81	79	80	81	79	80	81	79	80	81	79	80	81	79	80	81	79	80	81	79	80	81
35	13.9																										
40	13.4	8.0	9.0																								
45	12.7	7.8	8.6																								
50	12.2	7.7	8.2																								
55	11.7	7.5	7.8																								
60	11.1	7.4	7.4																								
65	10.4	7.2	7.2																								
70	9.5	7.1	6.9																								
75	8.3	6.9	6.7																								
80	7.0	6.7	6.5																								
85	5.9	6.5	6.3																								
90	5.0	6.4	5.5																								
95	4.1	6.2	4.7																								
100	3.3	6.0	3.8																								
110	2.1	5.6	2.4																								
120		5.1	1.4																								
130																											
140																											

Telescoping sequence %

Tel. 1	100			50																							Tel. 1	
Tel. 2	100			100																								Tel. 2
Tel. 3	100			100																								Tel. 3
Tel. 4	100			100																								Tel. 4
Tel. 5	50			100																								Tel. 5
<b>Code</b>	<b>1 02 01 3</b>	<b>1 02 01 4</b>	<b>1 02 01 5</b>	<b>1 16 01 3</b>	<b>1 16 01 4</b>	<b>1 16 01 5</b>	<b>1 01 01 3</b>	<b>1 01 01 4</b>	<b>1 16 01 5</b>	<b>1 01 01 3</b>	<b>1 01 01 4</b>	<b>1 01 01 5</b>	<b>2 01 01 3</b>	<b>2 01 01 4</b>	<b>2 01 01 5</b>	<b>Code</b>												

Operation and maintenance of this machine must be in compliance with the information provided in the "Operation and Maintenance Manual" supplied with this machine.



**Load rating chart ATF 80-4**

Lifting capacities in 1,000 lbs according per SAE J765 on fly jib 29.5 ft / 52.5 ft

**Counterweight 13,228 lbs**

On outriggers, 360° working area

**Outrigger base 23.62 ft**

Working Radius (ft)

Working Radius (ft)	Fly jib 29.5 ft offset						Fly jib 29.5 ft offset						Fly jib 52.5 ft offset						
	5°		20°		40°		5°		20°		40°		5°		20°		40°		
35	79	13.9					79	13.0											
40	78	13.4	80	9.0			78	12.9	80	9.0									
45	76	12.7	78	8.6			76	12.4	78	8.6									
50	75	12.2	77	8.2	79	5.8	75	12.0	77	8.2	79	5.8							
55	73	11.7	75	7.8	77	5.7	73	11.5	75	7.8	77	5.7	79	7.1					
60	72	11.1	74	7.4	76	5.6	72	11.0	74	7.4	76	5.6	78	6.8					
65	70	10.4	72	7.2	74	5.3	70	10.4	72	7.2	74	5.3	77	6.5	79	4.0			
70	69	9.7	71	6.9	73	5.2	69	9.9	71	6.9	73	5.2	75	6.2	77	3.9			
75	67	8.5	69	6.7	71	5.1	67	9.2	69	6.7	71	5.1	74	5.8	76	3.8			
80	65	7.1	67	6.5	69	5.0	65	8.3	67	6.5	69	5.0	72	5.4	75	3.7	78	2.4	
85	63	5.9	65	6.3	67	5.0	63	7.1	65	6.3	67	5.0	71	5.2	74	3.5	77	2.4	
90	62	4.9	64	5.3	65	4.9	62	6.0	64	6.0	65	4.9	70	5.1	73	3.4	75	2.3	
95	60	3.9	62	4.4	63	4.6	60	5.1	62	5.5	63	4.8	68	4.7	71	3.3	74	2.3	
100	58	3.1	60	3.5	61	4.0	58	4.3	60	4.7	61	4.6	66	4.5	69	3.1	72	2.3	
110	54	1.6	56	2.2	57	2.4	54	2.9	56	3.3	57	3.5	64	4.5	65	4.3	68	3.0	
120								1.7	51	2.0	52	2.2	61	3.4	64	2.8	67	2.1	
130								49	1.1	49	1.1	53	1.1	58	2.1	61	2.6	63	2.1
140												47	1.1	55	1.1	57	1.8	60	2.0

Telescoping sequence %

Tel. 1	100																		100	Tel. 1
Tel. 2	100																		100	Tel. 2
Tel. 3	100																		100	Tel. 3
Tel. 4	100																		100	Tel. 4
Tel. 5	50																		100	Tel. 5
<b>Code</b>	<b>1 02 04 0</b>	<b>1 02 04 1</b>	<b>1 02 04 2</b>	<b>1 16 04 0</b>	<b>1 16 04 1</b>	<b>1 16 04 2</b>	<b>1 01 04 0</b>	<b>1 01 04 1</b>	<b>1 01 04 2</b>	<b>2 01 04 0</b>	<b>2 01 04 1</b>	<b>2 01 04 2</b>	<b>2 01 04 0</b>	<b>2 01 04 1</b>	<b>2 01 04 2</b>	<b>2 01 04 0</b>	<b>2 01 04 1</b>	<b>2 01 04 2</b>	<b>Code</b>	

Operation and maintenance of this machine must be in compliance with the information provided in the "Operation and Maintenance Manual" supplied with this machine.

05-22-2003

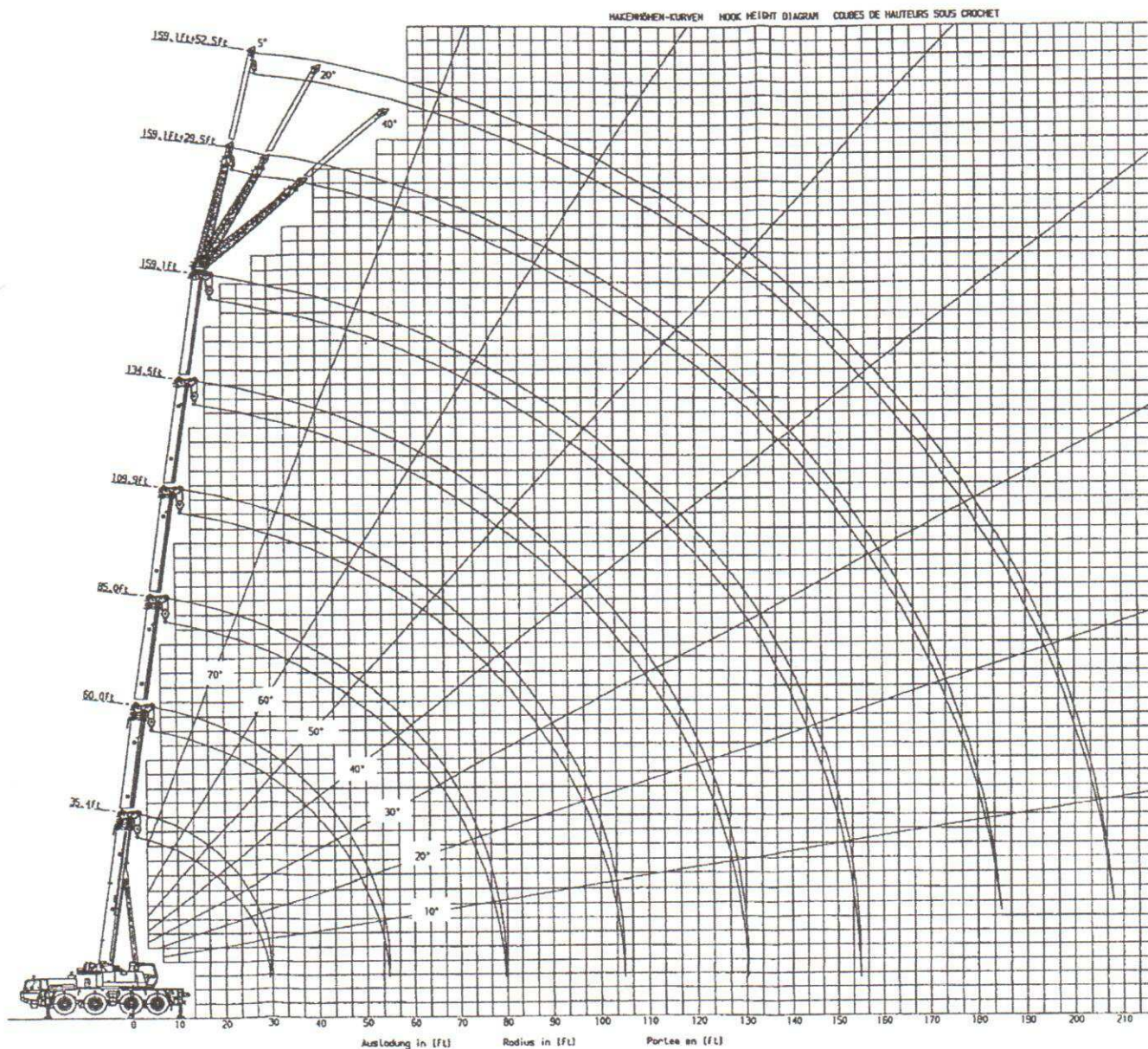
9970778869





**OPERATING RADIUS /  
LIFTING HEIGHT CHART**

with fly jib 29.5 ft / 52.5 ft



**NOTE :** Operating Radius is measured in feet from Axis of Rotation. Boom and jib geometry shown are for unloaded condition and machine standing level on firm supporting surface. Boom deflection and subsequent radius and boom angle change must be accounted for when applying load to hook.